

West Chester
Area School District

PA Youth Survey Results - 2015

Demographics

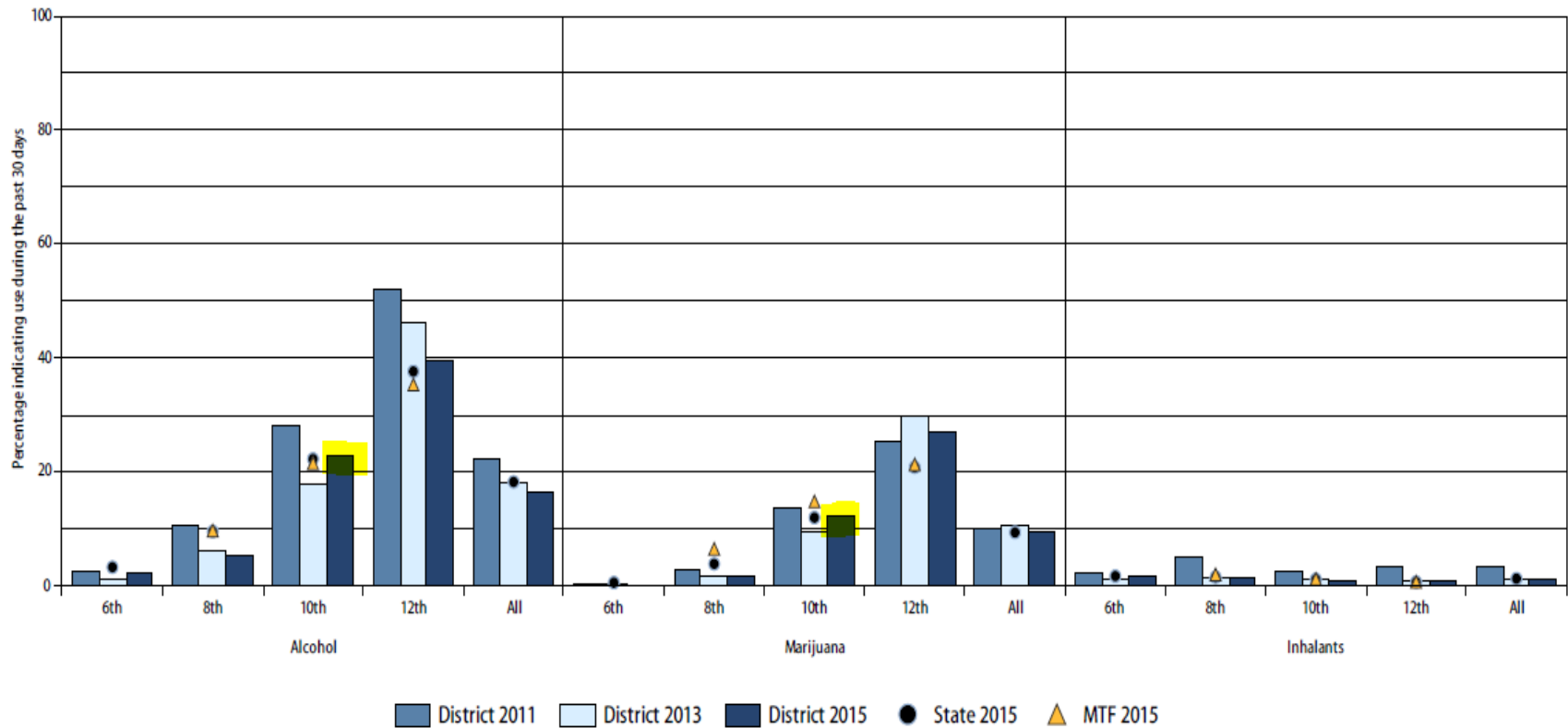
	District 2011		District 2013		District 2015		State 2015	
	Number	Percent	Number	Percent	Number	Percent	Number	Percent
Survey respondents								
All	2,993	100.0	3,049	100.0	3,000	100.0	216,916	100.0
Survey respondents by grade								
6	766	25.6	718	23.5	789	26.3	53,532	24.7
8	785	26.2	814	26.7	761	25.4	61,222	28.2
10	775	25.9	726	23.8	788	26.3	56,128	25.9
12	667	22.3	791	25.9	662	22.1	46,034	21.2
Survey respondents by gender								
Male	1,465	51.8	1,553	51.2	1,506	51.8	106,472	50.3
Female	1,361	48.2	1,479	48.8	1,400	48.2	105,341	49.7
Survey respondents by ethnicity								
Yes, of Hispanic, Latino, or Spanish origin	170	5.7	226	7.4	256	8.5	25,504	11.8
No, not of Hispanic, Latino, or Spanish origin	2,823	94.3	2,823	92.6	2,744	91.5	191,412	88.2
Survey respondents by race								
Black, African American	146	4.9	164	5.4	149	5.0	18,070	8.3
American Indian	17	0.6	16	0.5	27	0.9	3,326	1.5
Asian/Pacific Islander	161	5.4	208	6.8	212	7.1	9,915	4.6
White, Caucasian	2,332	77.9	2,432	79.8	2,280	76.0	157,967	72.8
Multi-racial	200	6.7	126	4.1	105	3.5	11,087	5.1
Race Unmarked	137	4.6	103	3.4	227	7.6	16,551	7.6

Alcohol, Tobacco & Other Drug (ATOD) Use

- **Early Initiation Drugs-** Alcohol, Cigarettes, Marijuana & Inhalants
- **Prescription Drugs-** Performance Enhancing Drugs, Narcotics, Tranquilizers, Stimulants
- **Other Drugs-** Cocaine, Crack, Methamphetamine, Heroin, Hallucinogens, Ecstasy, Synthetic Drugs

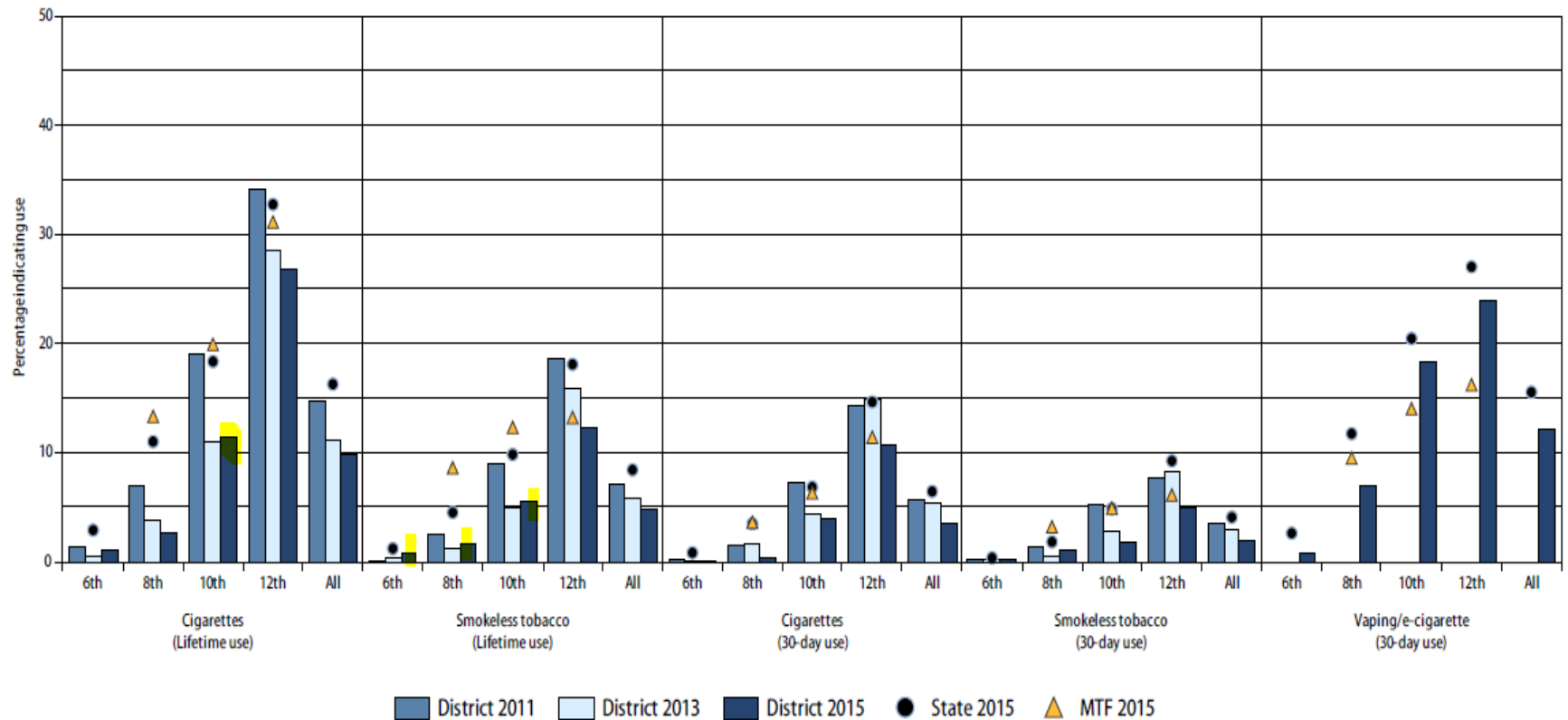
30 day use

Early initiation and higher prevalence drugs - 30-day use
West Chester Area School District 2015 Pennsylvania Youth Survey



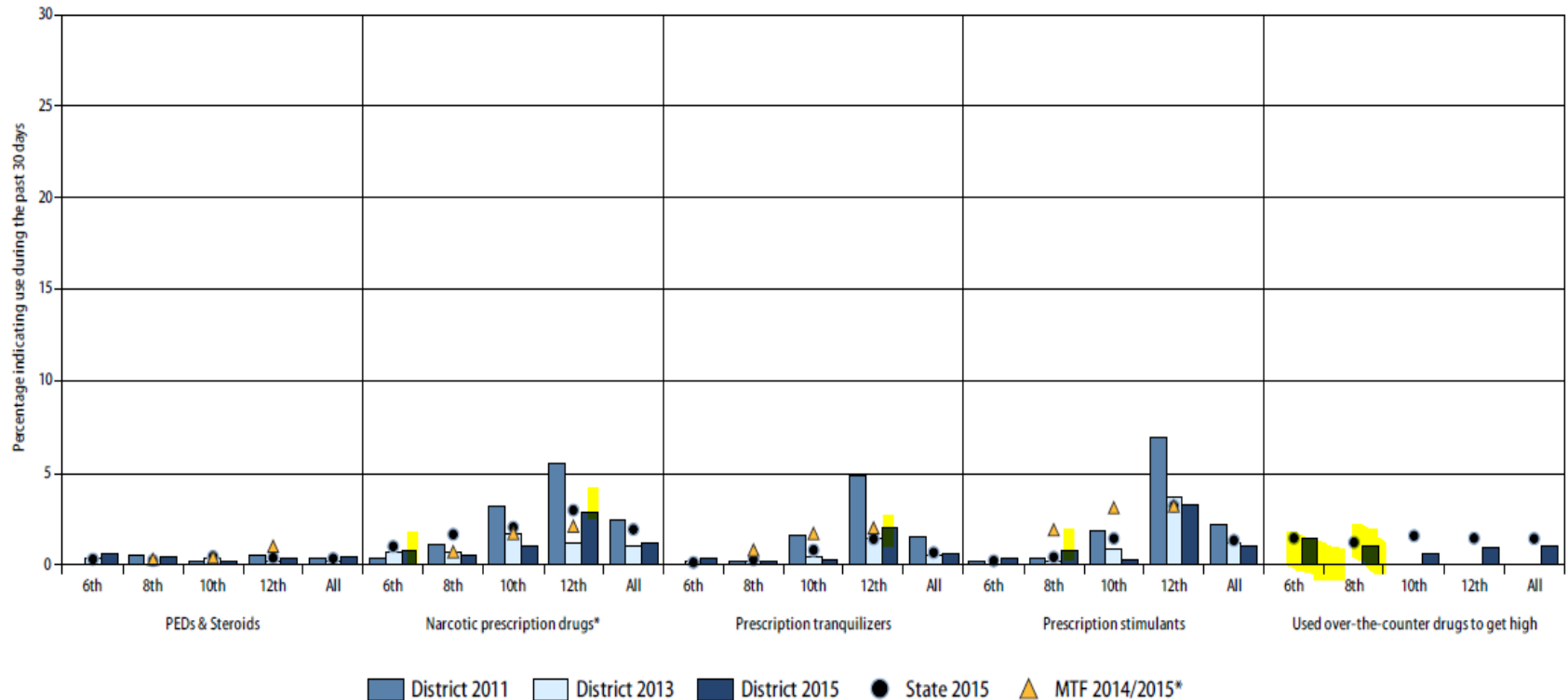
Tobacco and Vaping Past 30 days

Tobacco and Vaping - Lifetime and 30-day use
West Chester Area School District 2015 Pennsylvania Youth Survey



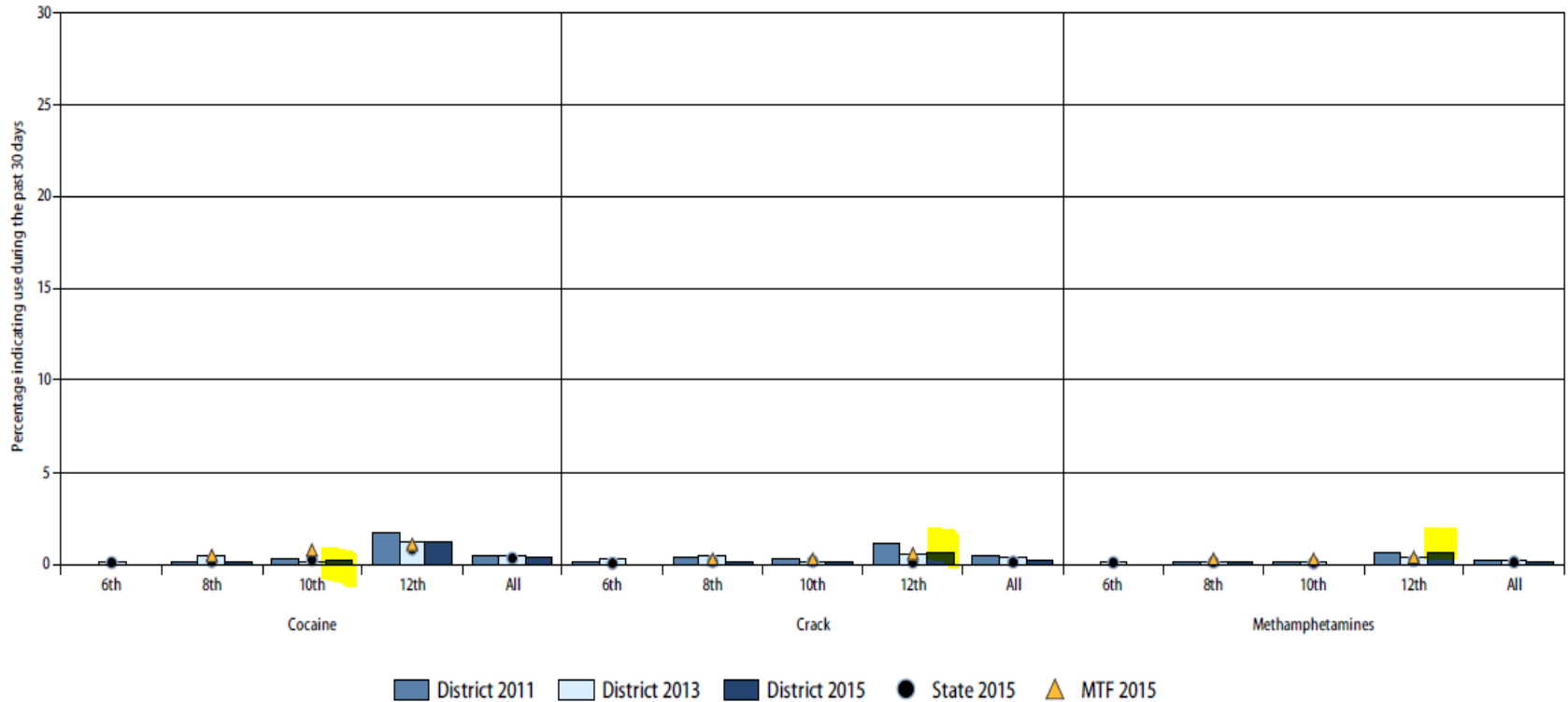
Prescription Drugs and over the counter drugs

Prescription and over-the-counter drugs and medications - 30-day use
West Chester Area School District 2015 Pennsylvania Youth Survey



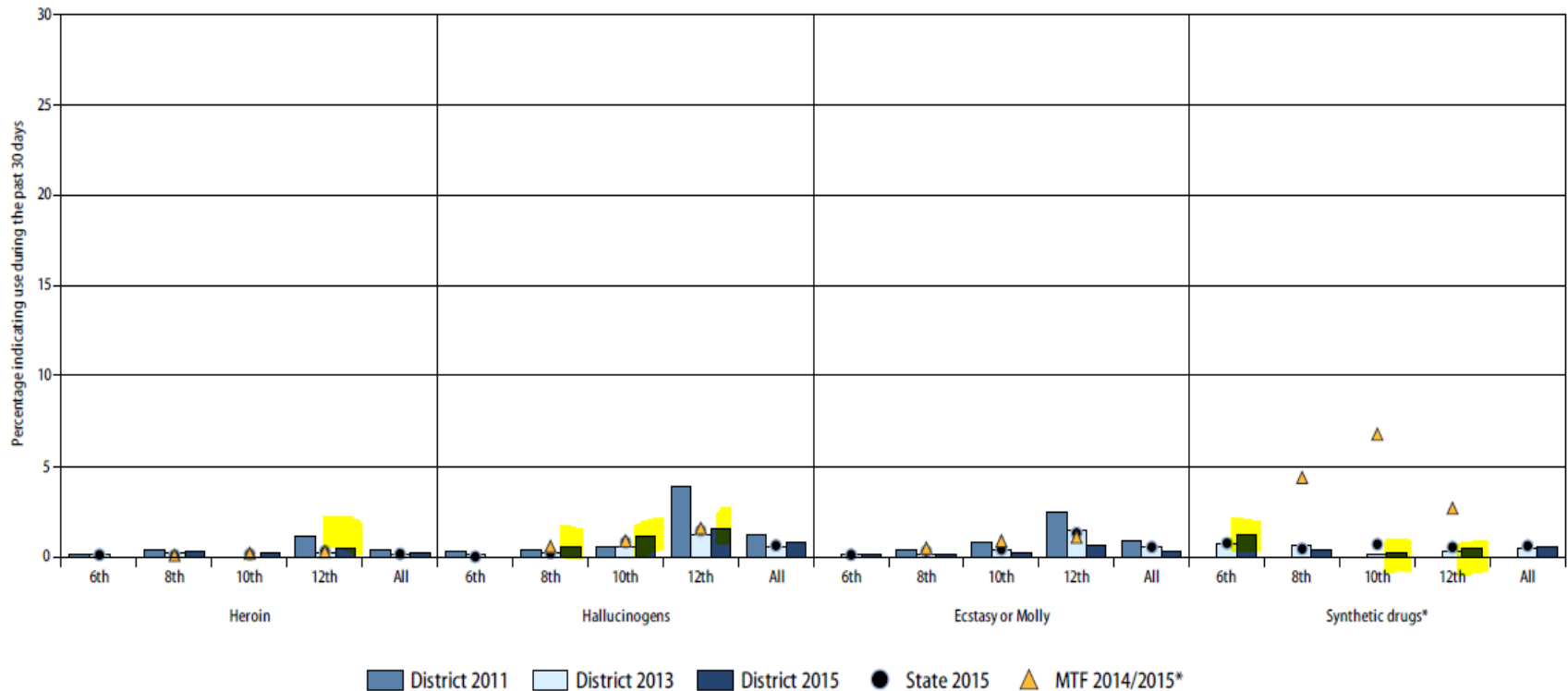
Other drugs

Other drugs (cocaine, crack, methamphetamines) - 30-day use
West Chester Area School District 2015 Pennsylvania Youth Survey



Heroin

Other drugs (heroin, hallucinogens, ecstasy, and synthetic drugs) - 30-day use
West Chester Area School District 2015 Pennsylvania Youth Survey

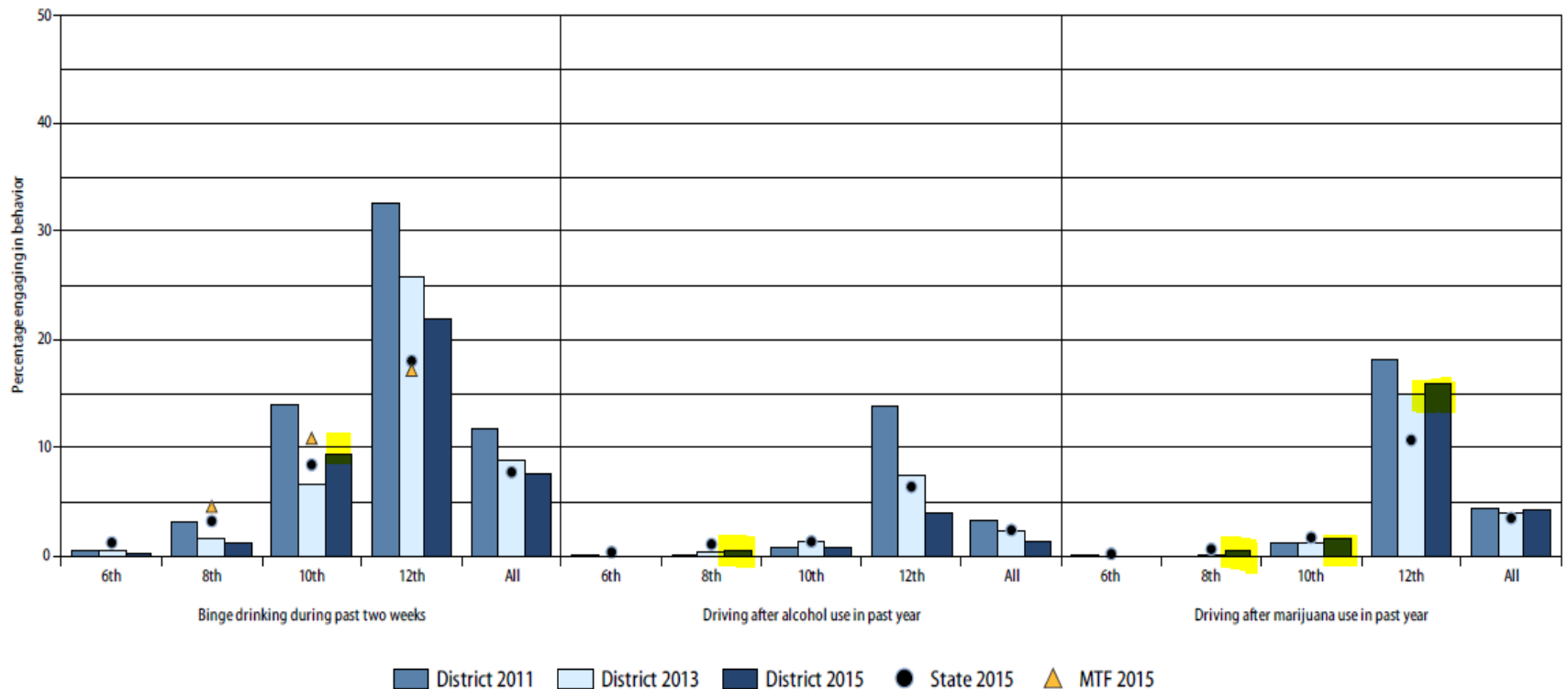


Risky Substance Use Behaviors

- Binge Drinking in past two weeks
- Driving after alcohol in the past year
- Driving after marijuana in the past year

Risky Behavior

Risky substance use-related behavior
West Chester Area School District 2015 Pennsylvania Youth Survey

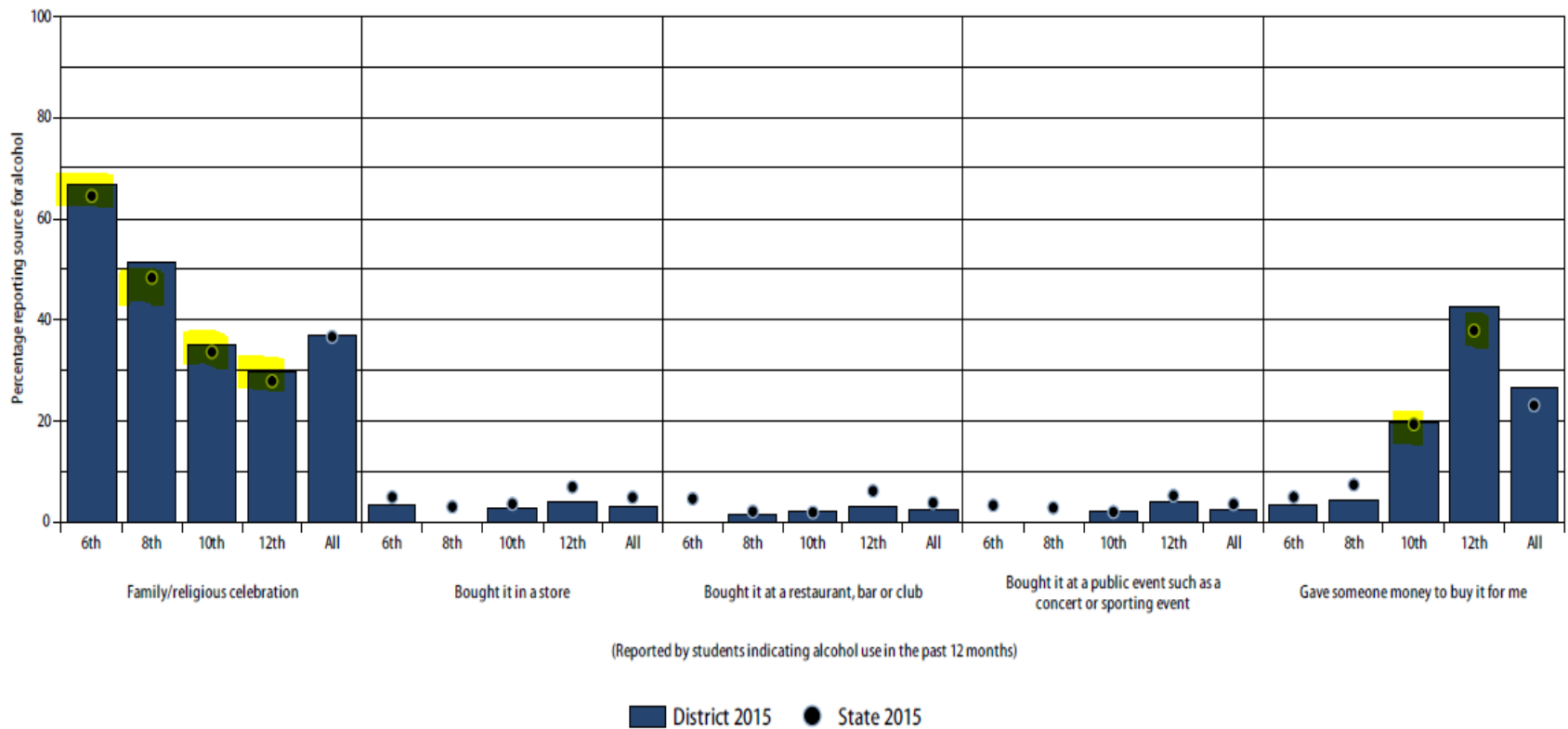


Access and Willingness to Use

- Source of Substance
- Willingness to Use
- Perceived Availability

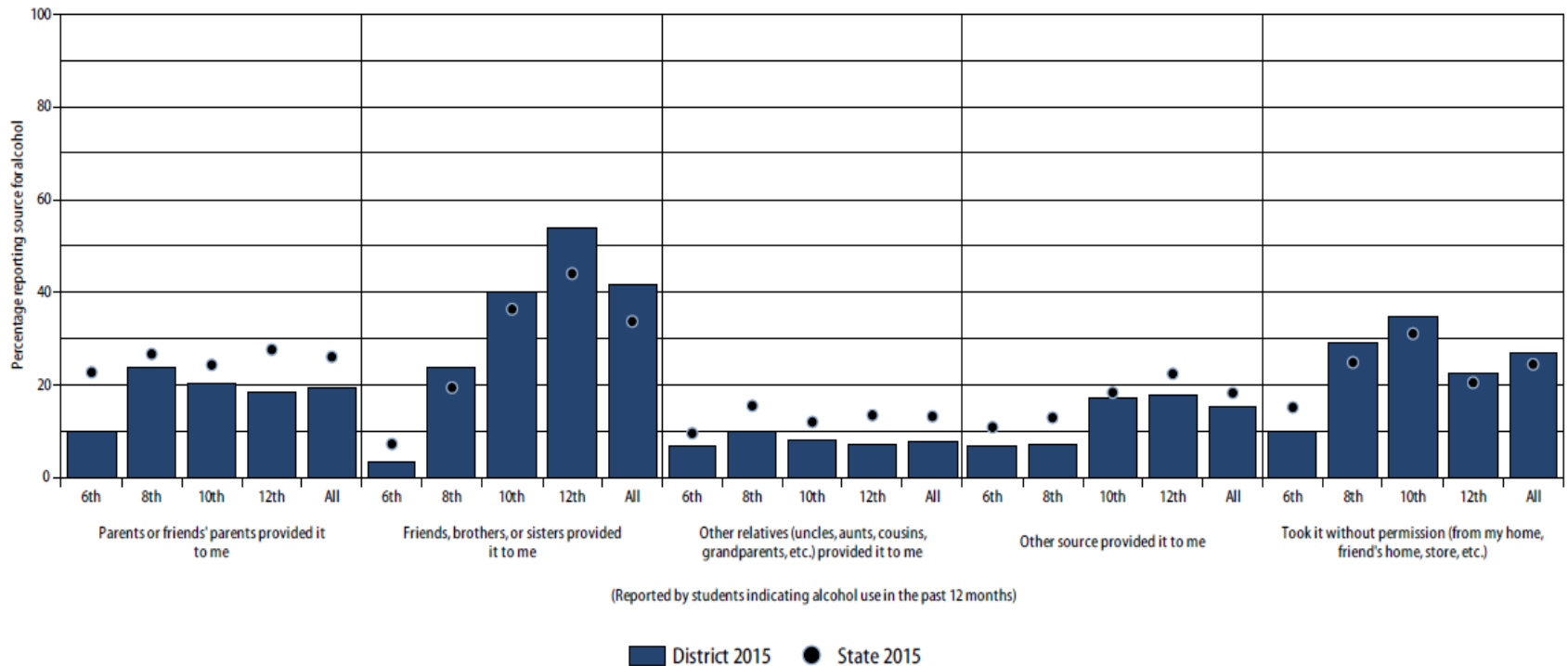
Source of Alcohol

Sources of alcohol
West Chester Area School District 2015 Pennsylvania Youth Survey



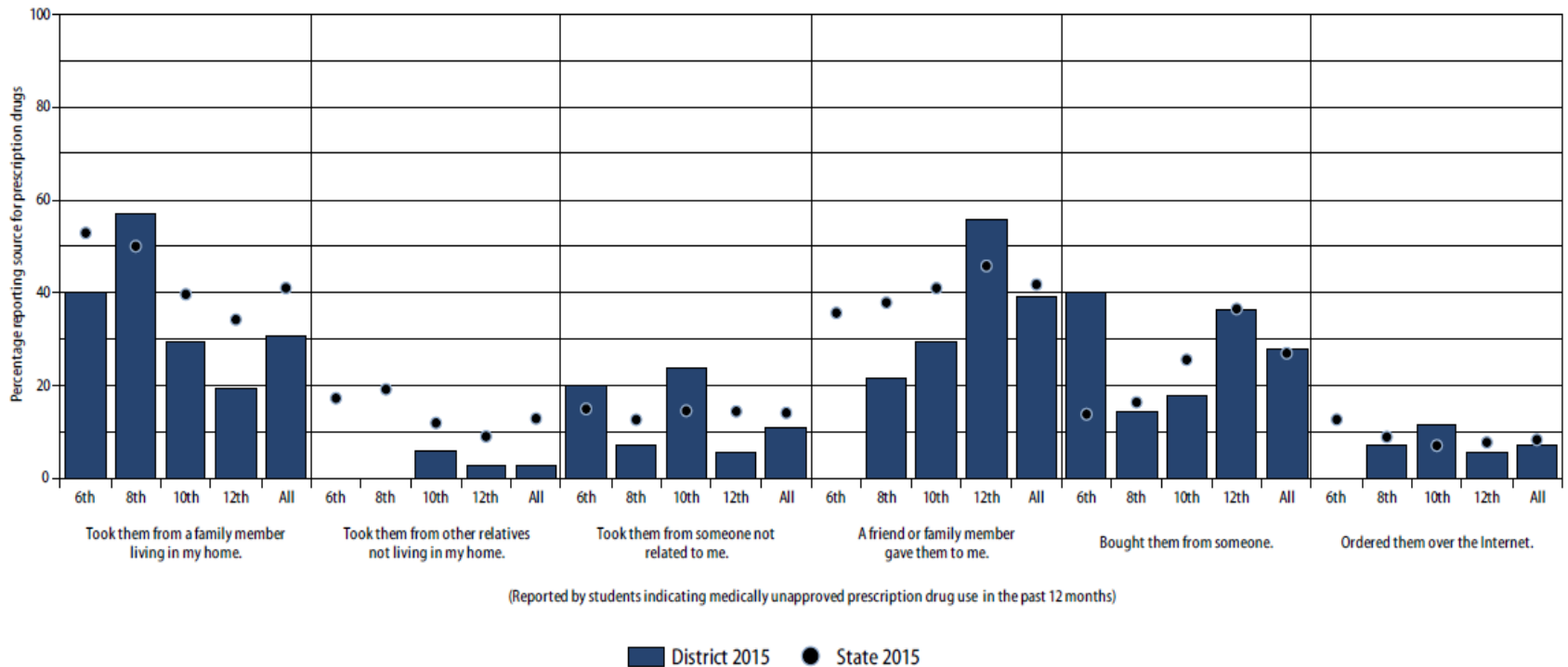
Source of Alcohol

Sources of alcohol (cont'd)
West Chester Area School District 2015 Pennsylvania Youth Survey



Source of Prescription Drugs

Sources of prescription drugs
West Chester Area School District 2015 Pennsylvania Youth Survey

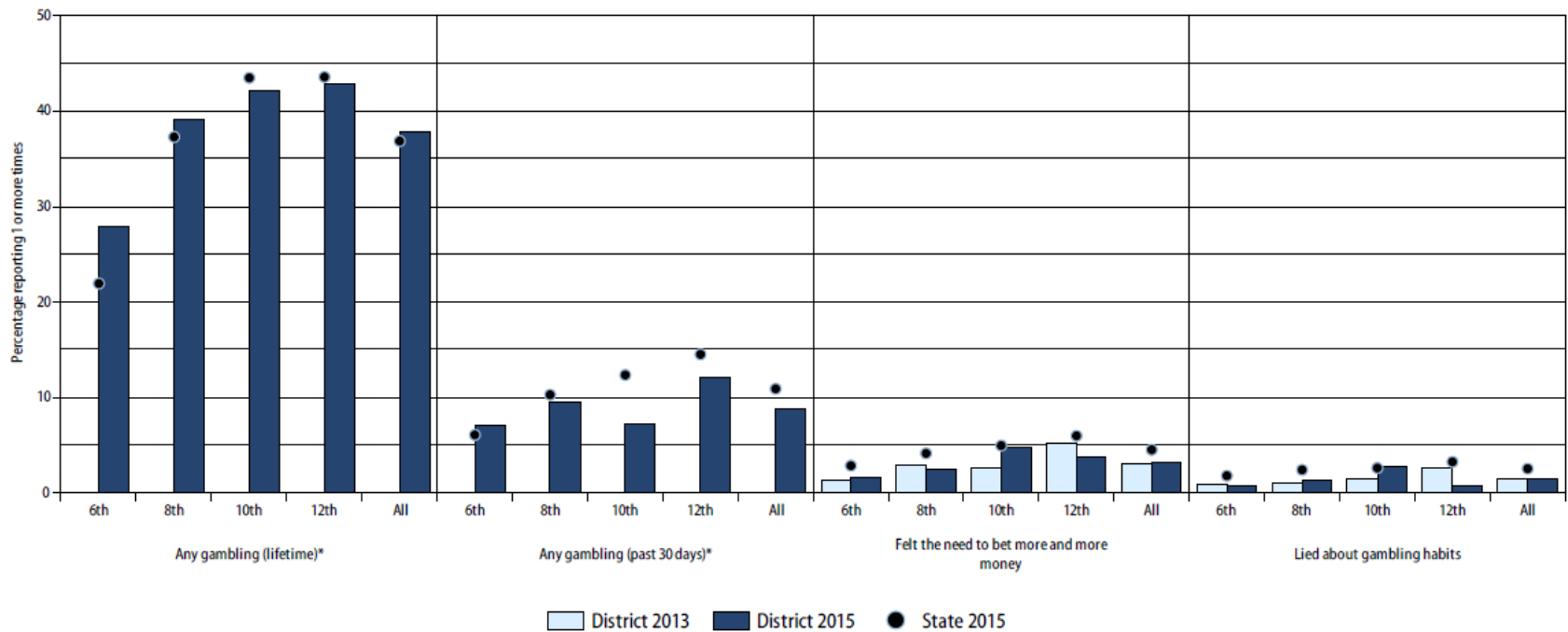


Antisocial Behavior

- Gambling
- Other:
 - Attacked someone
 - Sold illegal drugs
 - Been drunk or high at school
 - Been arrested
 - Been suspended from school

Gambling

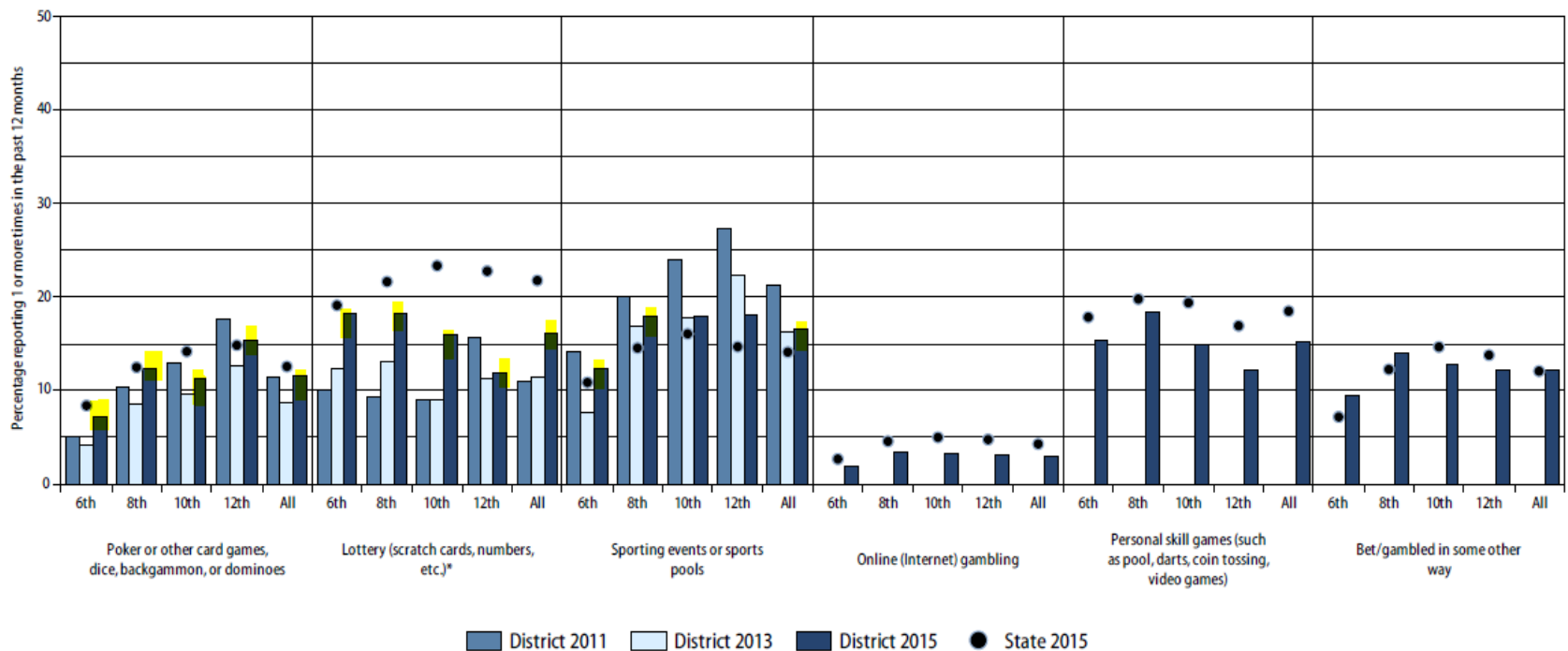
Gambling West Chester Area School District 2015 Pennsylvania Youth Survey



*Lifetime and 30 day gambling were not measured prior to 2015. (Previous PAYS administrations measured gambling over the past 12 months.)

Types of Gambling

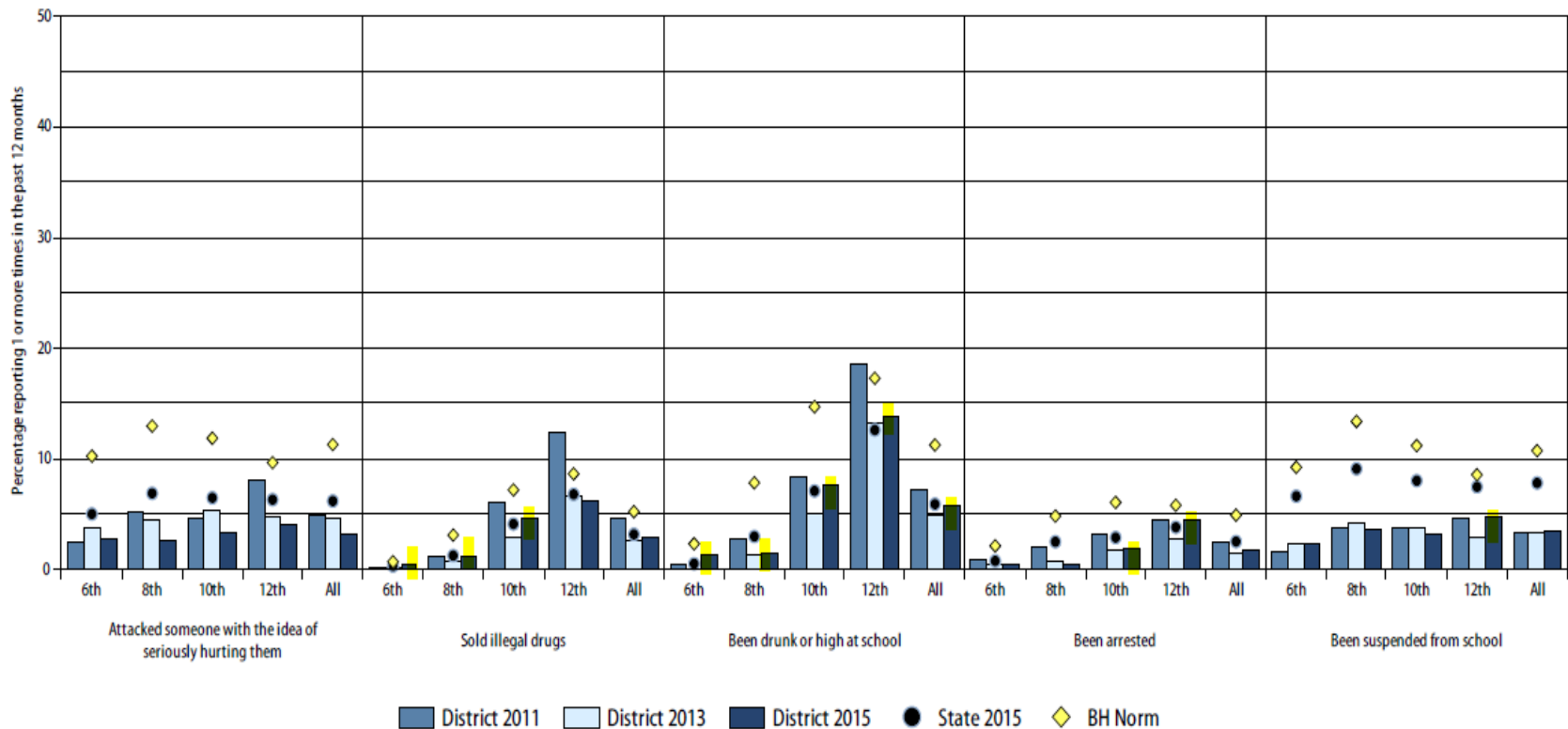
Types of gambling West Chester Area School District 2015 Pennsylvania Youth Survey



*The lottery response category was revised in 2015 with additional examples (scratch cards, numbers, etc.). Rates reported in 2015 may be higher than previous years' data.

Other Antisocial

Other antisocial behavior West Chester Area School District 2015 Pennsylvania Youth Survey



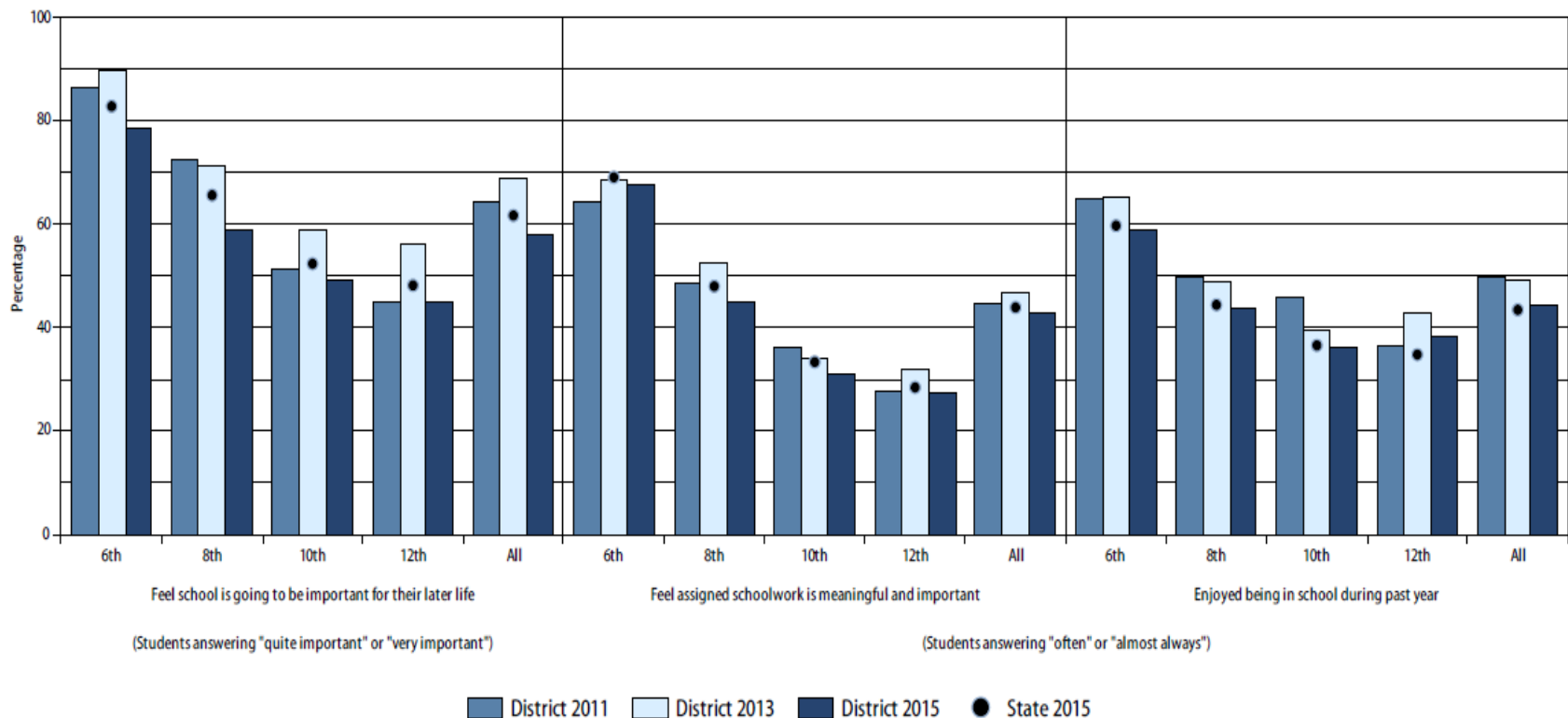


Commitment to School

- Perceived Importance of School
- Positive School Environment

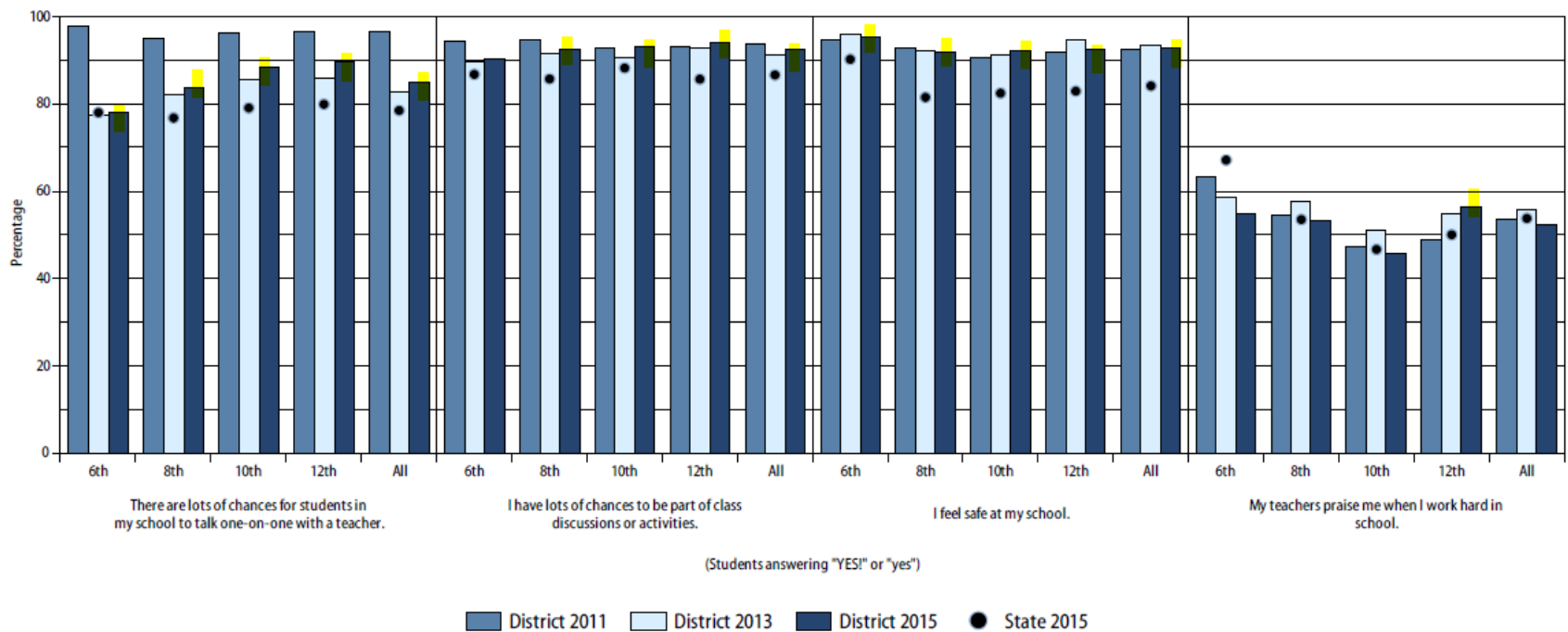
Commitment & Involvement in School

Commitment and involvement in school - Perceived importance of school
West Chester Area School District 2015 Pennsylvania Youth Survey



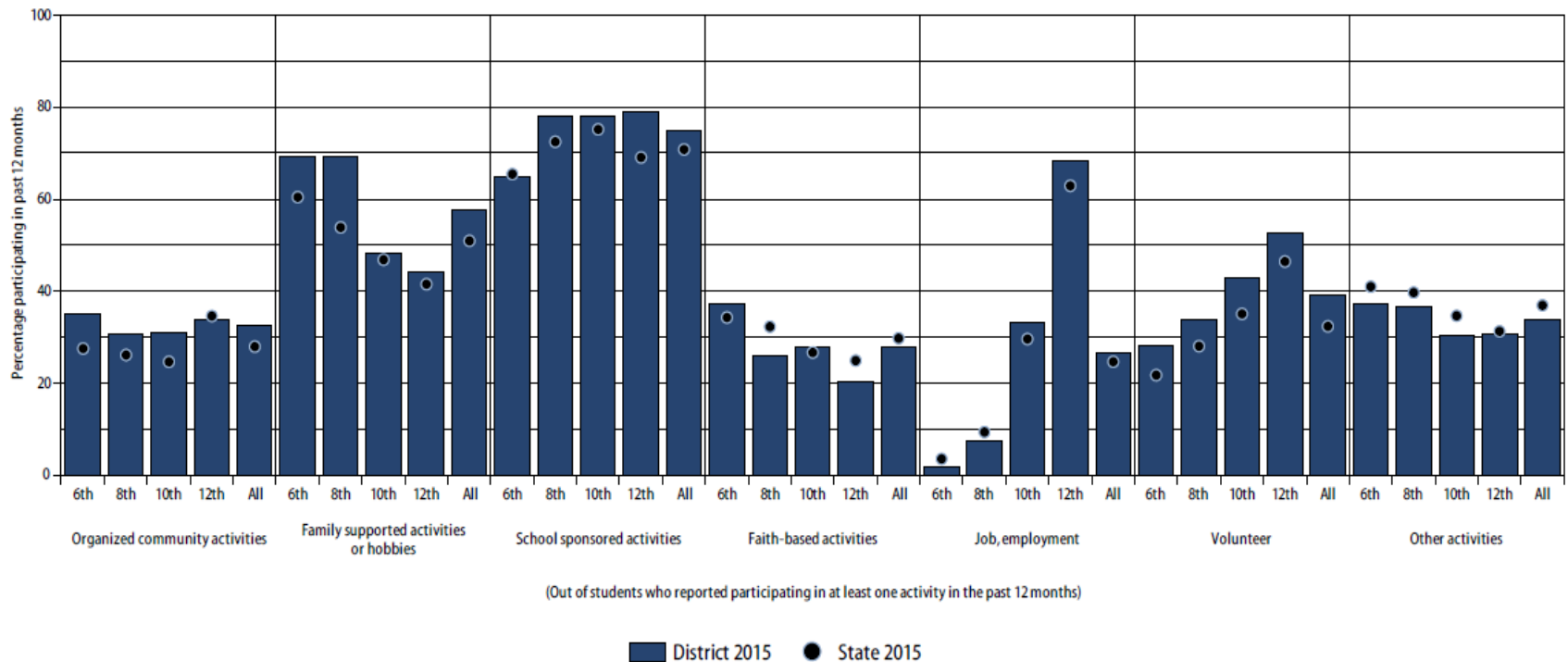
Positive School Environment

Commitment and involvement in school - Positive school environment
West Chester Area School District 2015 Pennsylvania Youth Survey



Involvement in After School and Community Activities

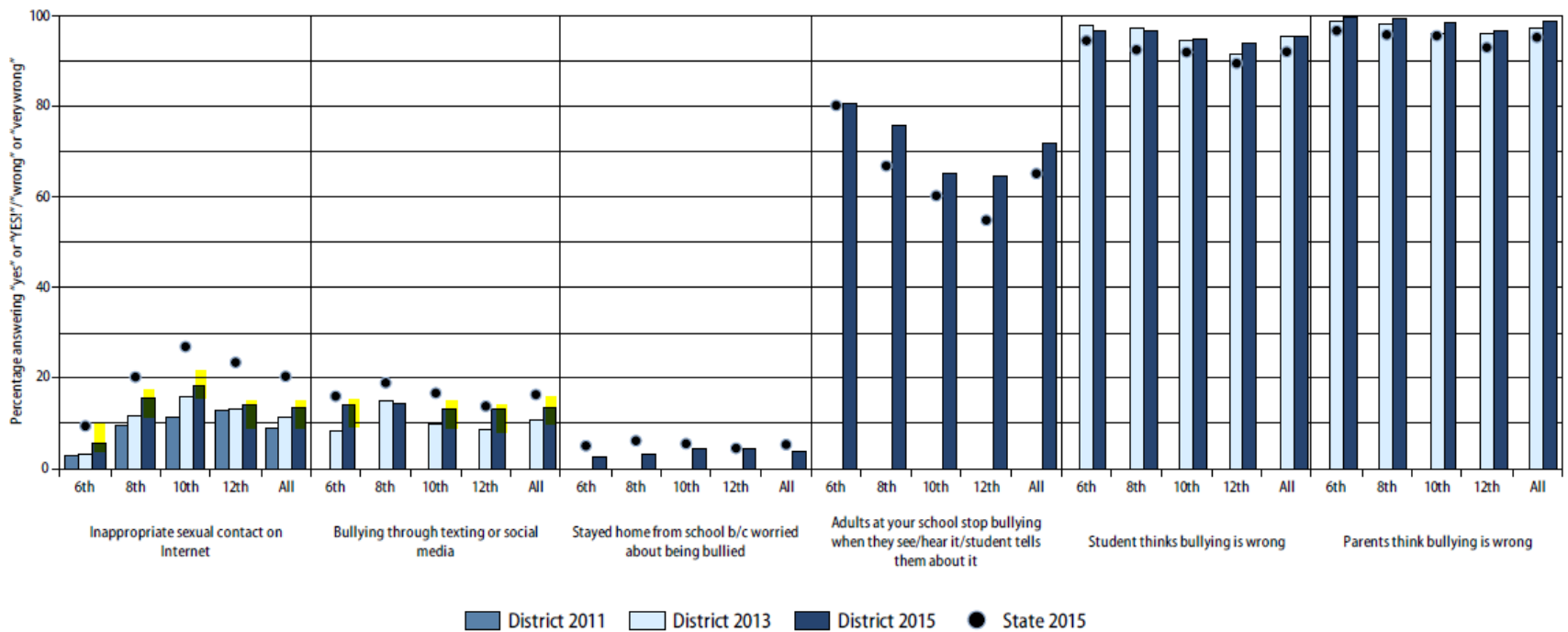
Involvement in after-school and community activities
West Chester Area School District 2015 Pennsylvania Youth Survey



(Out of students who reported participating in at least one activity in the past 12 months)

Bullying and Internet Safety

Bullying and Internet safety West Chester Area School District 2015 Pennsylvania Youth Survey



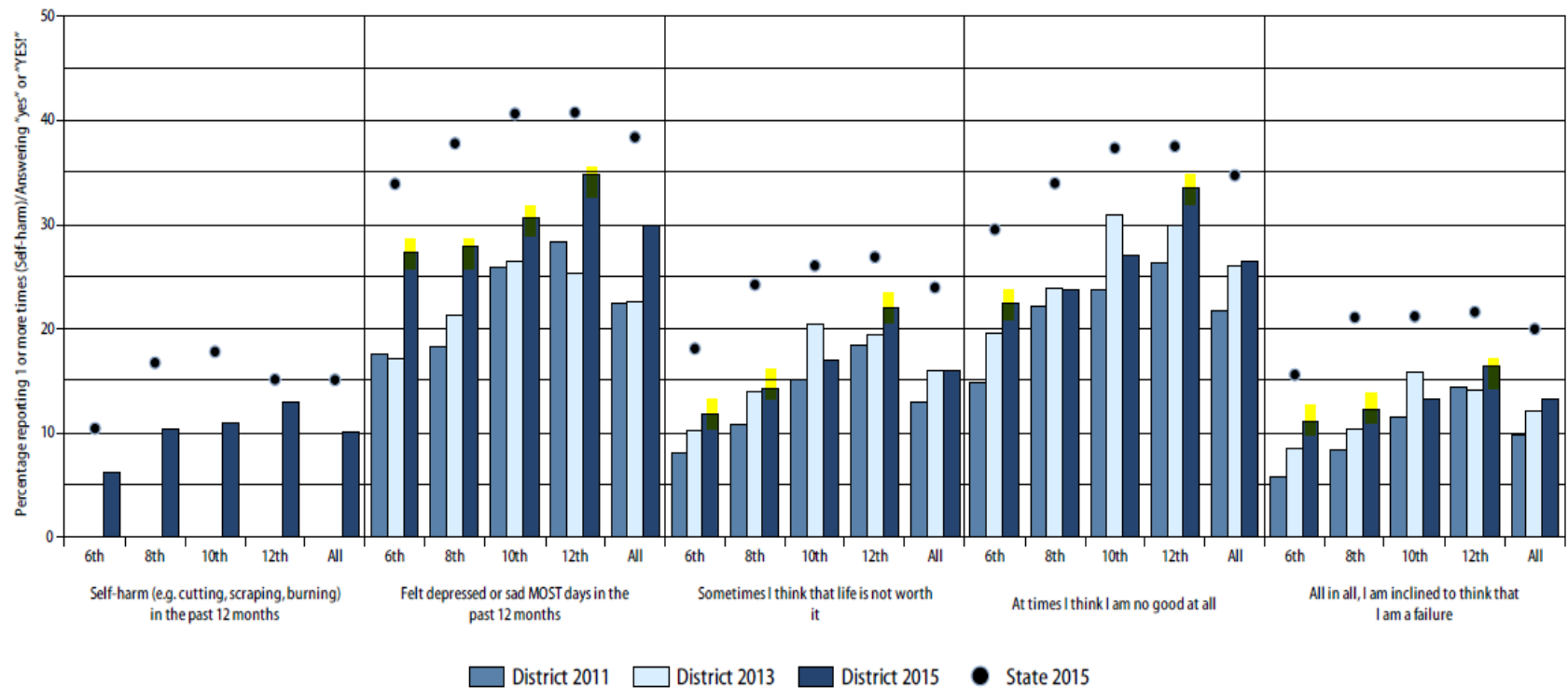


Social and Emotional Health

- Depression and Suicide Risk
- Family Separation
- Trauma, Grief, Transitions and other stressful events

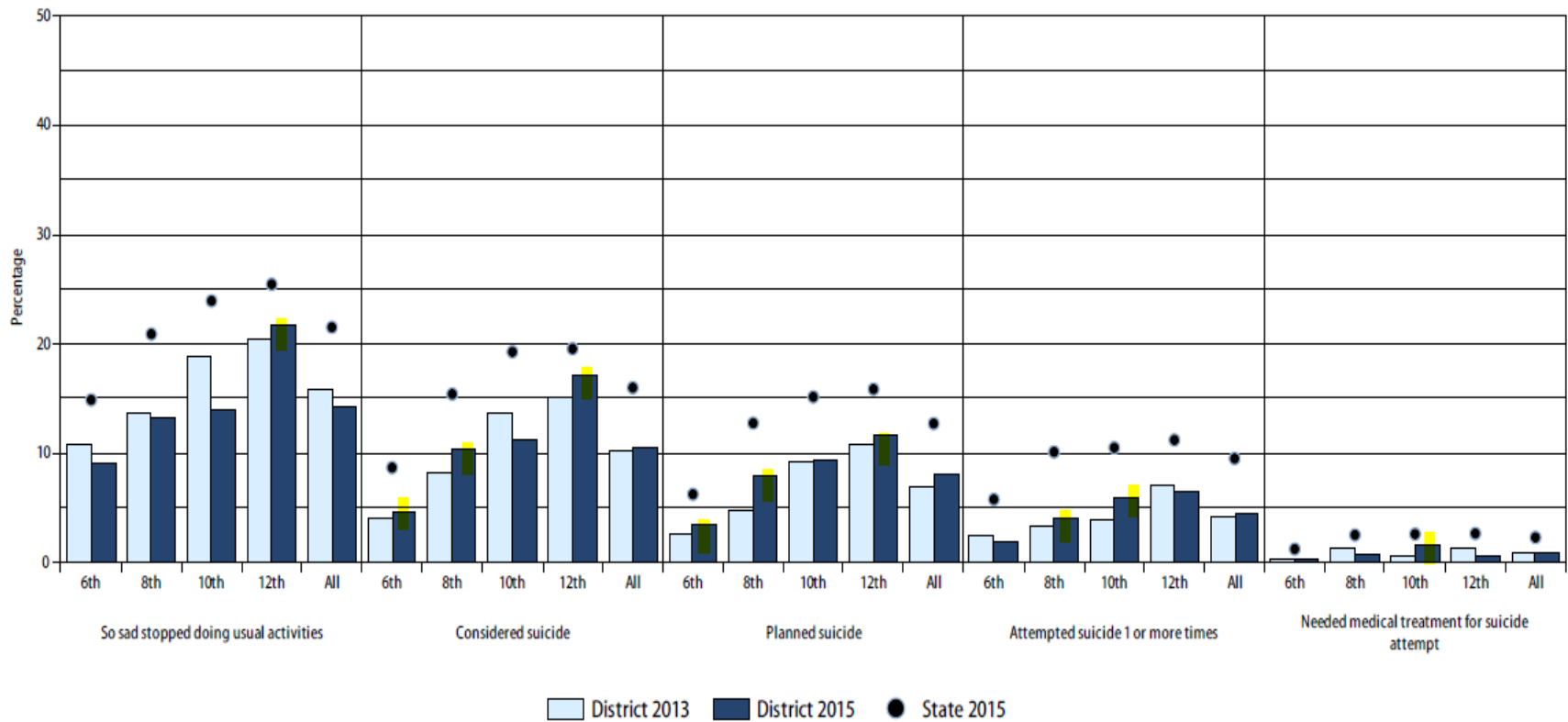
Mental Health Concerns

Mental Health Concerns West Chester Area School District 2015 Pennsylvania Youth Survey



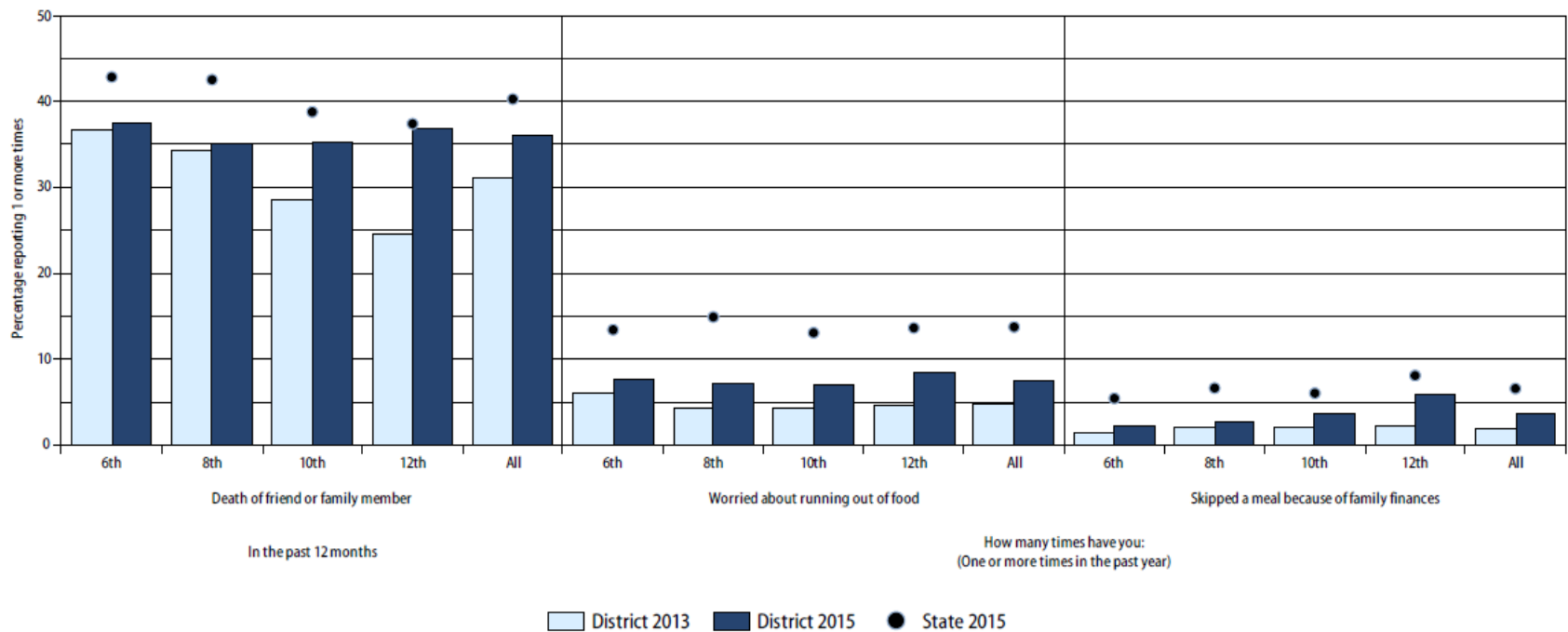
Suicide

Suicide risk West Chester Area School District 2015 Pennsylvania Youth Survey



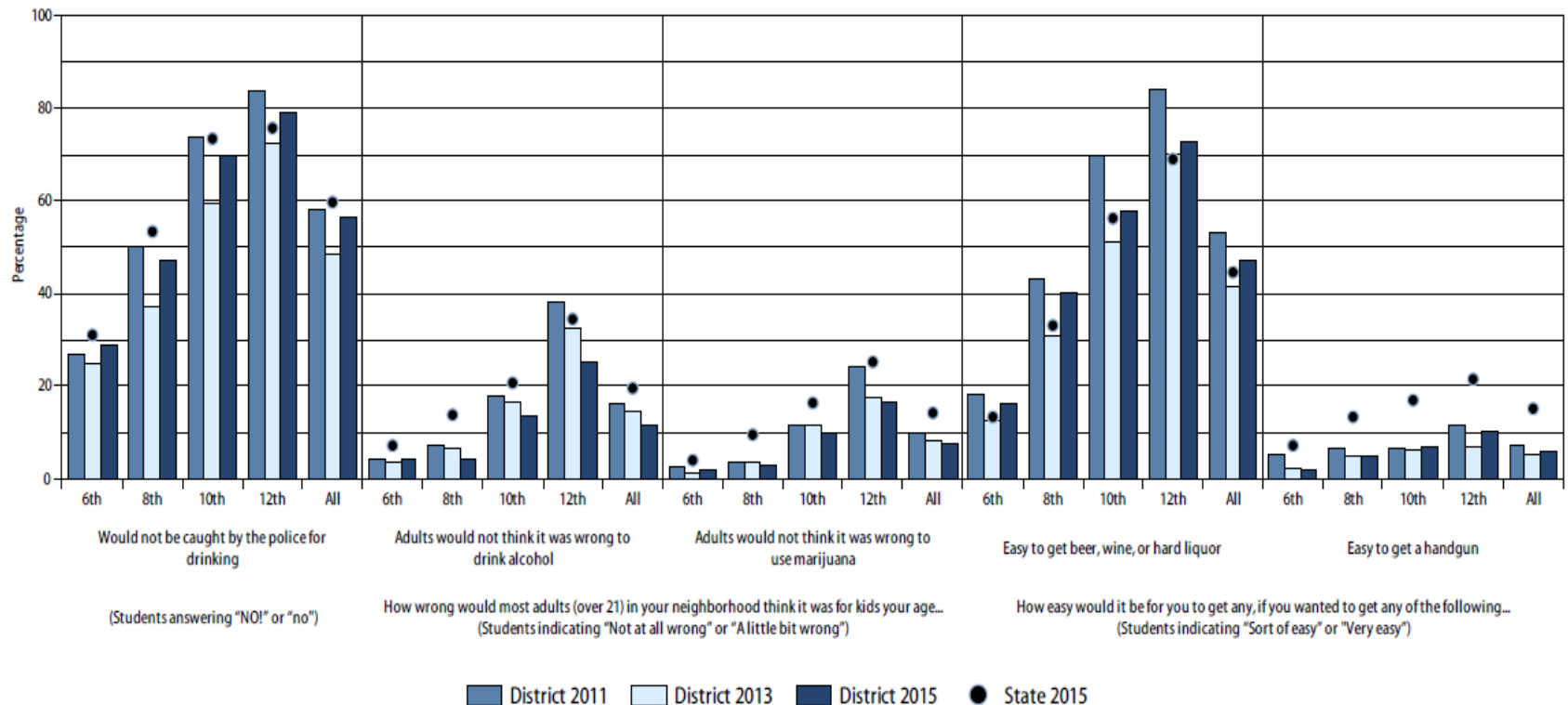
Grief and other stressful events

Grief and other stressful events West Chester Area School District 2015 Pennsylvania Youth Survey



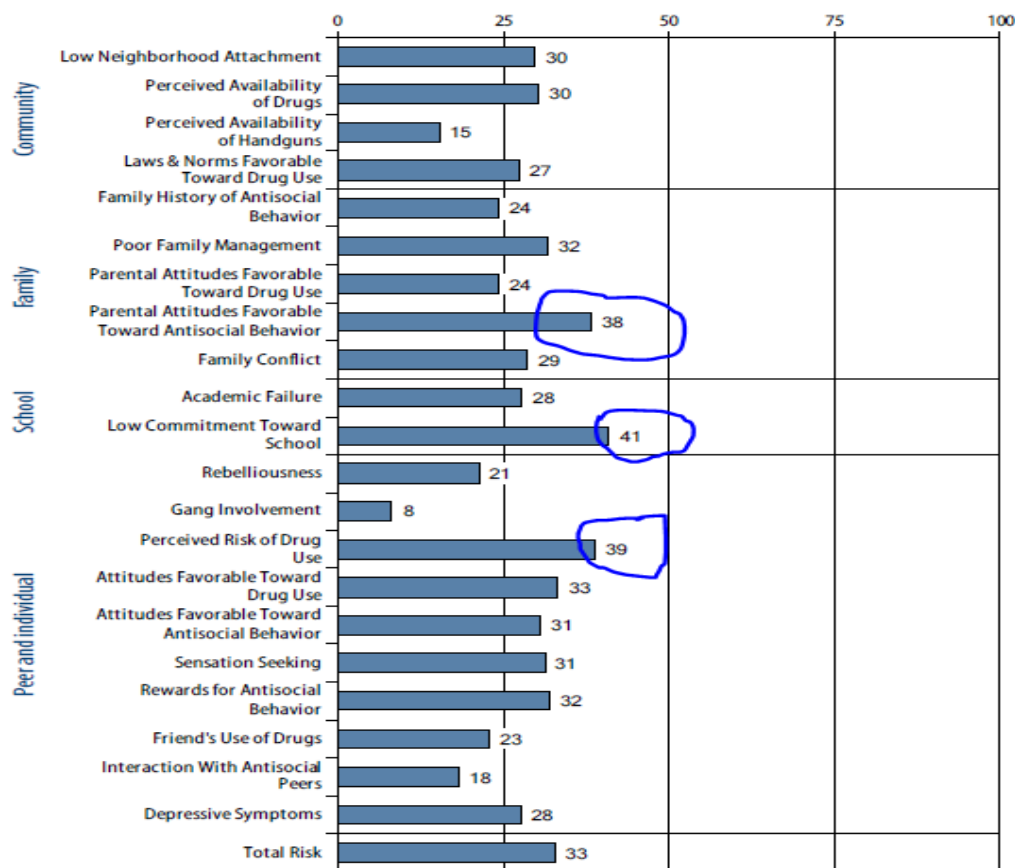
Community Risk

Community risk associated with availability West Chester Area School District 2015 Pennsylvania Youth Survey



Risk Factors

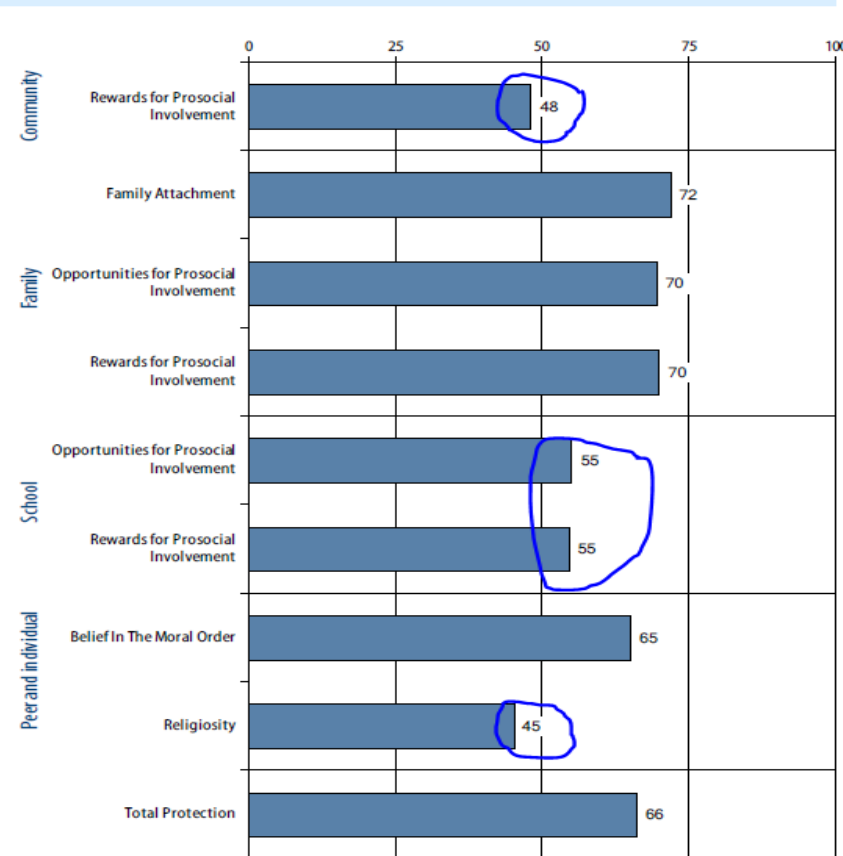
Risk Factors, 2015 Pennsylvania Youth Survey



Higher percentages are the areas to prioritize

Protective Factors

Protective Factors, 2015 Pennsylvania Youth Survey



Lower percentages are the areas to prioritize

Supports

- School Intervention Specialists, Counselors and Psychologists
- Intensive Outpatient Program group/individual(IOP)
- Achieve Progress Transition (APT) Academy
- Second Step
- West Chester Communities That Care (WCCTC)
- Narcotics Overdose Prevention and Education (NOPE)

Questions

